



NKHOTAKOTA  
POTTERY LODGE

Dear Guests,

Welcome to Nkhotakota Pottery Lodge! We are delighted to serve you in our restaurant situated at one of the most beautiful shores in Malawi. Since 2016 Pottery Lodge is under new Management that has made it their aim to create a warm but professional family atmosphere that meets the needs of our guests. All our staff members are here to make your stay pleasant and unforgettable.

**About our Restaurant:** We aim to use as many locally grown ingredients possible. Therefore, we created our own garden to grow vegetables, herbs and fruits. Additionally, we are supporting the creation of a community garden that is being taken care of by selected community members from our village. Every meal ordered is supporting and contributing to our aim of buying and producing ingredients in our community at Nkhandwe village.

**Availability of Meals:** Due to different seasons, market availability and our geographical location it is not always possible for us to have all our ingredients well stocked. Therefore, we kindly ask our guests for their understanding. Your waiter will inform you accordingly.

**Waiting times and advance orders:** All our meals are freshly prepared. Therefore, we kindly ask you to consider a waiting time of **approximately 45min**. Would you like to dine at a specific time or are you a large group? To ensure that your meals are being prepared in time please make sure to order well in advance. You can do that via WhatsApp or Phone call.

Customer Feedback is the breakfast for all champions!

We would appreciate if you could inform other guests about your stay at Nkhotakota Pottery Lodge:





NKHOTAKOTA  
POTTERY LODGE

# SNACKS

## CHICKEN WINGS

11,250 MWK

## CHICKEN GIZZARDS

9,750 MWK

## CHICKEN HEARTS

9,750 MWK

## SWEET POTATOE

9,750 MWK

## BEEF SAMOOSA

10,500 MWK

## VEGGY SAMOOSA

9,750 MWK

## COW'S HUMP "NELUNDA"

11,250 MWK

## SAUSAGE SNACK

9,750 MWK

## DRUM STICKS

11,250 MWK

**Restaurant hours**

6AM-9PM



NKHOTAKOTA  
POTTERY LODGE

# STARTERS

## SOUP

Vegetable Soup-----	11,000 MWK
Mushroom Soup-----	11,000 MWK
Onion Soup-----	11,000 MWK
Chicken Noodle Soup-----	11,000 MWK
Potatoe Carrot Soup-----	11,000 MWK
Ginger Carrot Soup-----	11,000 MWK
Tomatoe Soup-----	11,000 MWK
Hot & Sour Soup-----	11,000 MWK
Pumkin Soup-----	11,000 MWK

## SALAD

Mixed Salad-----	11,250 MWK
Tuna and Egg Salad-----	12,500 MWK
Potato Salad-----	11,250 MWK
Greek Salad-----	12,750 MWK
Coleslaw Salad-----	9,500 MWK
ChickenSalad-----	12,500 MWK

**Restaurant Hours**

6AM-9PM



NKHOTAKOTA  
POTTERY LODGE

# MAIN COURSES

MAIN COURSES CAN BE SERVED WITH: RICE, CHIPS, NSIMA, KONDOLE BOILED POTATOES, MASHED POTATOES OR CHAPATI.

## CHICKEN

### Chicken Kwasu-Kwasu

ON THE BONE CHICKEN PIECES INFUSED WITH HOMEMADE MARINADE AND COLORFUL VEGETABLE CHUNKS.

**16,250 MWK**

### Chicken Burger

BURGER IN A BREAD ROL LAID ON A BED OF LETTUCE, TOMATO, ONION AND CUCUMBER. THIS DISH IS SERVED WITH A DELICIOUS SIDE SALAD AND CRUNCHY CHIPS.

**14,250 MWK**

### Spaghetti Straganof

PASTA WITH CHICKENBREAST STRIPES IN CREAM SAUCE AND FRESH VEGETABLES.

**16,250MWK**

### 1/4 Fried Chicken

ON THE BONE CHICKEN INFUSED WITH HOMEMADE MARINATE SERVED WITH A DELICIOUS SALAD AND CRUNCHY CHIPS.

**15,000 MWK**

### Tropical Chicken Curry

CHICKEN FILLET IN A MOUTHWATERING CURRY WITH JUICY PINEAPPLE PIECES. LET YOUR WAITER KNOW HOW SPICY THE CHEF CAN PREPARE THIS MEAL FOR YOU.

**16,500MWK**

### Sweet Chicken

CHICKEN ON THE BONE MARINATED WITH OUR HOMEMADE MARINADE TOPPED WITH HONEY.

**16,500 MWK**

### Chicken Thyme

CHICKEN ON THE BONE INFUSED WITH FRESH THYME (IF AVAILABLE) AND A HOME MARINADE.

**16,500 MWK**

**Restaurant Hours**  
6AM-9PM



NKHOTAKOTA  
POTTERY LODGE

# MAIN COURSES

MAIN COURSES CAN BE SERVED WITH: RICE, CHIPS, NSIMA, KONDOLE BOILED POTATOES, MASHED POTATOES OR CHAPATI.

## CHICKEN

### Chicken Kebab

CHICKEN FILLET PIECES INFUSED WITH HOMEMADE MARINADE ON A SPIKE WITH COLORFUL VEGGIES.

**16,500 MWK**

### Chicken Wrap

FRIED CHICKEN BREAST FILLET STRIPES AND SEASONAL VEGETABLES IN A HOMEMADE WRAP WITH SALAD AND CHIPS.

**16,500 MWK**

### Chicken Nuggets

FRIED CHICKEN BREAST PIECES BREADED AND SERVED WITH AN EXOTIC DIP AND A SIDE DISH OF YOUR CHOICE.

**16,500 MWK**

### Chickem Kiv

OVEN BAKED CHICKEN FILLET STUFFED WITH VEGETABLES TOPPED WITH CHEESE IN TOMATO SAUCE SERVED WITH A SIDE DISH OF YOUR CHOICE.

**16,500 MWK**

### Que Sadilla

LAYERS OF DELICIOUS CHICKEN FILLET STRIPES, VEGETABLES AND CHAPATI BAKED IN THE OVEN.

**16,500 MWK**

### Honey & Mustard Chicken

FRIED CHICKEN PIECES INFUSED WITH SWEET HOMEMADE MARINADE WITH COLORFUL VEGGIES. SERVED WITH A SIDE DISH OF YOUR CHOICE.

**16,500MWK**

**Restaurant Hours**  
6AM-9PM



NKHOTAKOTA  
POTTERY LODGE

# MAIN COURSES

MAIN COURSES CAN BE SERVED WITH: RICE, CHIPS, NSIMA, KONDOLE BOILED POTATOES, MASHED POTATOES OR CHAPATI.

## BEEF

### T-Bone Steak

A MOUTHWATERING BEEF STEAK ON THE BONE INFUSED WITH HOMEMADE MARINADE SERVED WITH SALAD AND A SIDE DISH OF YOUR CHOICE. LET YOUR WAITER KNOW HOW DONE YOU WISH TO HAVE YOUR STEAK.

**25,000 MWK**

### Nkhandwe Steak

A JUICY PIECE OF BONELESS STEAK INFUSED WITH OUR HOMEMADE MARINADE SERVED WITH SALAD AND A SIDE DISH OF YOUR CHOICE.

**25,000 MWK**

### Chipo Mince Meat

A DELICIOUS BOLOGNESE SAUCE MADE FROM MINCE-MEAT IN A UNIQUELY SPICED GRAVY. THIS DISH IS USUALLY SERVED WITH SPAGHETTI.

**25,000 MWK**

### Beef Burger

BURGER IN A BREAD ROLL LAID ON A BED OF LETTUCE, TOMATO, ONION AND CUCUMBER. THIS DISH IS SERVED WITH A DELICIOUS SIDE SALAD AND CRUNCHY CHIPS.

**25,000 MWK**

**Restaurant Hours**  
6AM-9PM



NKHOTAKOTA  
POTTERY LODGE

# MAIN COURSES

MAIN COURSES CAN BE SERVED WITH: RICE, CHIPS, NSIMA, KONDOLE BOILED POTATOES, MASHED POTATOES OR CHAPATI.

## BEEF

### Beef Fillet

AN UNBELIEVABLE JUICY AND SOFT PIECE OF FINE BEEF FILLET INFUSED WITH OUR HOMEMADE MARINADE SERVED WITH A SIDE DISH OF YOUR CHOICE. LET YOUR WAITER KNOW HOW DONE YOU WISH TO HAVE YOUR FILLET.

**28,500 MWK**

### Beef Stew

BEEF ON THE BONE IN A DELICIOUS SPICY GRAVY SERVED WITH A SIDE DISH OF YOUR CHOICE.

**25,000 MWK**

### Beef Wrap

FRIED BEEF FILLET STRIPES AND SEASONAL VEGETABLES IN A HOMEMADE WRAP WITH SALAD AND CHIPS.

**28,500 MWK**

### Sirlon Steak

A BONELESS BEEF STEAK IN HOMEMADE MARINADE SERVED WITH SALAD AND A SIDE DISH OF YOUR CHOICE. LET YOUR WAITER KNOW HOW DONE YOU WISH TO HAVE YOUR STEAK.

**28,500 MWK**

### Rib-Eye Steak

A DELICIOUS BEEF STEAK FROM THE RIB SECTION IN HOMEMADE MARINADE SERVED WITH SALAD AND A SIDE DISH OF YOUR CHOICE. LET YOUR WAITER KNOW HOW DONE YOU WISH TO HAVE YOUR STAKE

**28,500 MWK**

**Restaurant Hours**

6AM-9PM



NKHOTAKOTA  
POTTERY LODGE

# MAIN COURSES

MAIN COURSES CAN BE SERVED WITH: RICE, CHIPS, NSIMA, KONDOLE BOILED POTATOES, MASHED POTATOES OR CHAPATI.

## BEEF

### Pepper Steak

A JUICY PIECE OF STEAK INFUSED WITH OUR HOMEMADE PEPPER MARINADE SERVED WITH SALAD AND A SIDE DISH OF YOUR CHOICE.

**28,500 MWK**

### Beef Kebab

MOUTHWATERING BEEF FILLET PIECES INFUSED WITH HOMEMADE MARINADE ON A PIKE WITH COLORFUL VEGGIES.

**28,500 MWK**

### Rump Steak

A BONELESS BEEF STAKE IN HOMEMADE MARINADE SERVED WITH SALAD AND A SIDE DISH OF YOUR CHOICE. LET YOUR WAITER KNOW HOW DONE YOU WISH TO HAVE YOUR STAKE.

**28,500 MWK**

**Restaurant Hours**

6AM-9PM





NKHOTAKOTA  
POTTERY LODGE

# MAIN COURSES

MAIN COURSES CAN BE SERVED WITH: RICE,  
CHIPS, NSIMA, KONDOLE BOILED POTATOES,  
MASHED POTATOES OR CHAPATI.

## FISH

### **Medium: Whole Chambo**

LAKE MALAWI FISH INFUSED WITH OUR HOMEMADE MARINADE TOPPED WITH A SLICE OF FRESH LOCAL LEMON. PLEASE LET YOUR WAITER KNOW IF YOU WOULD LIKE YOUR FISH TO BE OPEN OR CLOSED, FRIED OR GRILLED.

**26,750 MWK**

### **Large: Whole Chambo**

THIS DISH WILL TURN YOUR DINNER INTO A UNIQUE EXPERIENCE. OUR LARGE CHAMBO/MCHENI IS INFUSED WITH HOMEMADE MARINADE TOPPED WITH A SLICE OF FRESH LOCAL LEMON. PLEASE LET YOUR WAITER KNOW IF YOU WOULD LIKE YOUR FISH OPEN OR CLOSED, FRIED OR GRILLED.

**29,750 MWK**

### **Medium: Whole Mcheni**

LAKE MALAWI FISH INFUSED WITH OUR HOMEMADE MARINADE TOPPED WITH A SLICE OF FRESH LOCAL LEMON. PLEASE LET YOUR WAITER KNOW IF YOU WOULD LIKE YOUR FISH TO BE OPEN OR CLOSED, FRIED OR GRILLED.

**26,750 MWK**

### **Large: Whole Mcheni**

THIS DISH WILL TURN YOUR DINNER INTO A UNIQUE EXPERIENCE. OUR LARGE CHAMBO/MCHENI IS INFUSED WITH HOMEMADE MARINADE TOPPED WITH A SLICE OF FRESH LOCAL LEMON. PLEASE LET YOUR WAITER KNOW IF YOU WOULD LIKE YOUR FISH OPEN OR CLOSED, FRIED OR GRILLED.

**29,750 MWK**

**Restaurant Hours**

6AM-9PM



NKHOTAKOTA  
POTTERY LODGE

# MAIN COURSES

MAIN COURSES CAN BE SERVED WITH: RICE, CHIPS, NSIMA, KONDOLE BOILED POTATOES, MASHED POTATOES OR CHAPATI.

## FISH

### **Fish Fillet**

FISH FILLET INFUSED WITH OUR HOMEMADE MARINADE TOPPED WITH A SLICE OF FRESH LOCAL LEMON. LET YOUR WAITER KNOW IF YOU WOULD LIKE TO HAVE YOUR FILLET FRIED OR GRILLED.

**29,750 MWK**

### **Fillet Wrapped in Bacon**

FISH FILLET INFUSED WITH OUR HOMEMADE MARINADE WRAPPED INTO STRIPS OF BACON AND TOPPED WITH A SLICE OF FRESH LOCAL LEMON. LET YOUR WAITER KNOW IF YOU WOULD LIKE YOUR FILLET TO BE FRIED OR GRILLED.

**29,750 MWK**

### **Tilapia Tacos**

MALAWI FISH TACOS LOADED WITH FRESH INGREDIENTS AND PIECES OF THE FAMOUS TILAPIA. HOMEMADE SAUCE AND COLORFUL VEGETABLES INCLUDED.

**29,750 MWK**

### **Breaded Fish Fillet**

FISH FILLET INFUSED WITH OUR HOMEMADE MARINADE DIPPED IN BREAD CRUMBS AND TOPPED WITH A SLICE OF FRESH LOCAL LEMON. LET YOUR WAITER KNOW IF YOU WOULD LIKE YOUR FILLET FRIED OR GRILLED.

**29,750 MWK**

**Restaurant Hours**  
6AM-9PM



NKHOTAKOTA  
POTTERY LODGE

# MAIN COURSES

MAIN COURSES CAN BE SERVED WITH: RICE, CHIPS, NSIMA, KONDOLE BOILED POTATOES, MASHED POTATOES OR CHAPATI.

## VEGETARIAN

### Vegetable Curry

DELICIOUS VEGETABLE CURRY PACKED WITH ALL KINDS OF LOCAL VEGGIES. OUR UNIQUE SPICING GIVES THIS DISH AN UNFORGETTABLE FLAVOR.

**25,000 MWK**

### Coconut Curry

DELICIOUS COCONUT CURRY IS PACKED WITH MANY LOCAL VEGGIES DEPENDING ON THE SEASON AND COOKED IN A CREAMY COCONUT MILK. OUR UNIQUE SPICING GIVES THIS DISH THE FINAL TOUCH. LET YOUR WAITER KNOW WHICH SIDE DISH YOU WISH TO HAVE WITH THIS MEAL.

**25,000 MWK**

### Okra Curry

THIS CURRY IS PREPARED WITH LOCALLY FOUND OKRA COOKED WITH CORIANDER AND MASALA. LET YOUR WAITER KNOW WHICH SIDE DISH YOU WISH TO HAVE WITH THIS MEAL.

**25,000 MWK**

### Vegetable Quiche

PASTRY CRUST FILLED WITH DELICIOUS VEGETABLES AND EGG, TOPPED WITH GOUDA CHEESE AND BAKED.

**25,000 MWK**

### Vegetable Wrap

DELICIOUS VEGETABLES IN A HOMEMADE WRAP SERVED WITH SALAD AND A SIDE DISH OF YOUR CHOICE.

**25,000 MWK**

### Vegetable Moussaka

LAYERS OF ROASTED VEGETABLE WITH A CHUNKY TOMATO SAUCE, TOPPED WITH CREAMY BECHAMEL SAUCE AND CHEESE.

**25,000 MWK**

**Restaurant Hours**

6AM-9PM



NKHOTAKOTA  
POTTERY LODGE

# MAIN COURSES

MAIN COURSES CAN BE SERVED WITH: RICE, CHIPS, NSIMA, KONDOLE BOILED POTATOES, MASHED POTATOES OR CHAPATI.

## OTHER

### Lamb Chops

TENDER PIECES OF LAMP CHOP IN HOMEMADE MARINADE SERVED WITH A SIDE DISH OF YOUR CHOICE.

**28,500 MWK**

### Pork Chops

TENDER PIECES OF PORK CHOPS IN HOMEMADE MARINADE SERVED WITH A SIDE DISH OF YOUR CHOICE.

**28,500 MWK**

### Pork Fillet

BEST QUALITY PORK FILLET IN HOMEMADE MARINADED SAUCE AND SERVED WITH A SIDE DISH OF YOUR CHOICE.

**28,500 MWK**

### Oxtail with beans

DELICIOUS LOCAL BEANS IN A TOMATO ONION GRAVY WITH SOFT OXTAIL PIECES WITH A SIDE DISH OF YOUR CHOICE.

**25,000 MWK**

### Mang'ina

STEWED COW TROTTERS IN A DELICIOUS SAUCE SERVED WITH A SIDEDISH OF YOUR CHOICE.

**20,000 MWK**

### Goat Stew

GOAT ON THE BONE IN A DELICIOUS WELL FLAVORED STEW WITH A SIDE DISH OF YOUR CHOICE.

### Bacon Burger

BURGER IN A BREAD ROLL LAID ON A BED OF LETTUCE, TOMATO, ONION, CUCUMBER. BACON. THIS DISH IS SERVED WITH A DELICIOUS SIDE SALAD AND CRUNCHY CHIPS.

**25,000 MWK**

**25,000 MWK**

**Restaurant Hours**

6AM-9PM



NKHOTAKOTA  
POTTERY LODGE

# HOMEMADE PIZZA

## PIZZA MARGHERITA

TOMATO SAUCE & MOZZARELLA

**25,000 MWK**

## VEGETABLE PIZZA

TOMATO SAUCE, MOZZARELLA & VEGETABLES

**25,000 MWK**

## TUNA PIZZA

TOMATO SAUCE, MOZZARELLA, ONION & TUNA

**25,000 MWK**

## CHICKEN PIZZA

TOMATO SAUCE, MOZZARELLA, VEGETABLES & CHICKEN  
BREAST STRIPES

**25,000 MWK**

## FULLHOUSE PIZZA

TOMATO SAUCE, MOZZARELLA, VEGETABLES & CHICKEN  
BREAST STRIPES

**27,500 MWK**

## BOLOGNESE PIZZA

TOMATO SAUCE, MOZZARELLA, MINCED  
MEAT, ONION & FRESH TOMATO

**25,000 MWK**

**Restaurant Hours**

6AM-9PM



NKHOTAKOTA  
POTTERY LODGE

# BREAKFAST

## LIGHT CONTINENTAL

Toast with Butter and Marmalade/Jam and Tea/Coffee

12,500 MWK

## NKHANDWE BREAKFAST

Toast served with Butter and Marmalade. Jam. Fruit Salad or Fruit juice, Cereal or Muesli and Tea/Coffee. Children's portion for 9,500MWK

14,000 MWK

## ENGLISH BREAKFAST

Eggs, Sausage, Fried Tomato. Toast with Butter, Marmalade/Jam or Honey. Fruit juice or Fruit Salad and Tea/Coffee. Children's portion for 14,000MWK

18,000 MWK

## SAUSAGE AND TOAST

Two Beef or Pork Sausages with Toast and Butter

14000 MWK

## EGGS AND TOAST

Two Eggs either fried, scrambled or boiled with Toast and Butter

10,500MWK

## PANCAKES

Two Pancakes with Marmalade/Jam or Honey. Extra Fruit Topping for 3,500MWK

10,500MWK

## CHEESE AND TOMATO OMLETTE

Served Chips/Toast and Tea/Coffee

14,500 MWK

## SPANISH OMLETTE

Served Chips/Toast and Tea/Coffee

15,000 MWK

Restaurant Hours

6AM-9PM



NKHOTAKOTA  
POTTERY LODGE

# SWEET CORNER

## DESSERTS

### **Vanilla Cheese Cake • 10,000 MWK**

Served with Vanilla Sauce.

### **Chocolate Cake • 10,000 MWK**

Served with Chocolate Sauce.

### **Carrot Cinnamon Cake • 10,000 MWK**

Served with Karamel Sauce.

### **Apple Crumble Cake • 10,000 MWK**

Served with Custard Sauce.

### **Swiss Role • 10,000 MWK**

Served with Caramel Sauce.

### **Wonder Pancake • 15,500 MWK**

Pancake filled with Chocolate Sauce and Fruits, topped with Vanilla Ice-Cream.

### **Vanilla Ice Cream • 10,000 MWK**

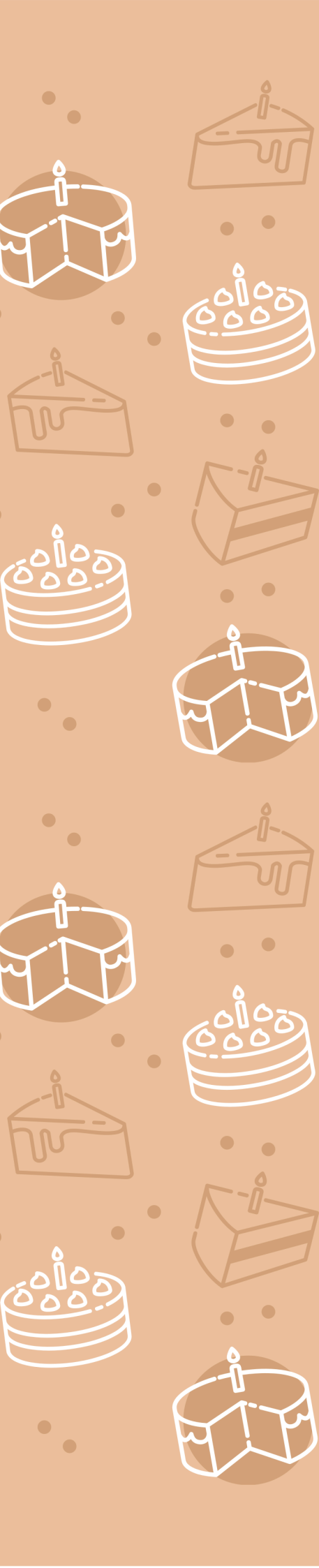
Served with a Sauce of your choice and Toppings.

### **Semmi Freddo • 10,000 MWK**

Ice Cream Cake with Roasted Peanuts.

### **Chocolate Brownie • 10,000 MWK**

Served with Whipped Cream





# SANDWICH

---

**CHICKEN MAYO** 15,000 MWK

**BACON AND EGG** 15,000 MWK

**EGG AND MAYONNAISE** 15,000 MWK

**CHEESE AND TOMATO** 15,000 MWK

**TUNA AND MAYONNAISE** 15,000 MWK

**VEGETABLE** 15,000 MWK

**Restaurant Hours**  
**6AM-9PM**